

Mirror Trading Manager

© 1999-2026 ANTON NEL (formerly CODEWISE)



anton.nel.be@gmail.com



@antonnel



www.antonnel.net/mirror



Proxy Guide v5.4.x

(Last Date: 20 May 2026)

<https://free.geonix.com/en/proxy-checker/>

MetaTrader, MT4, and MT5 are trademarks of MetaQuotes Ltd. This product is not affiliated with or endorsed by MetaQuotes.

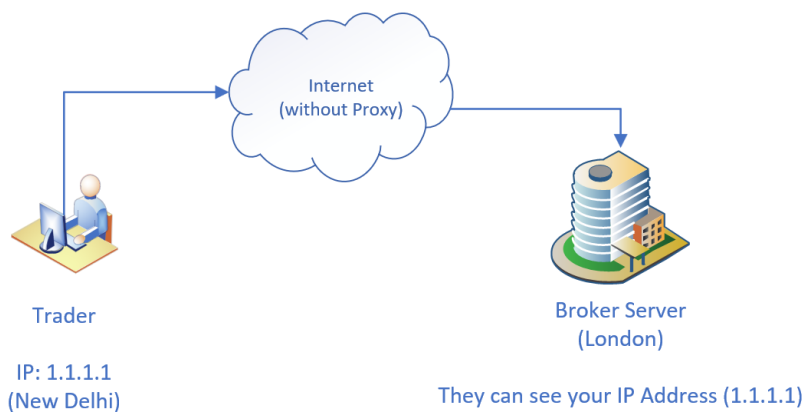
cTrader® is the registered trademarks of Spotware Systems Ltd.

Microsoft, Windows are the registered trademarks of Microsoft Corporation.

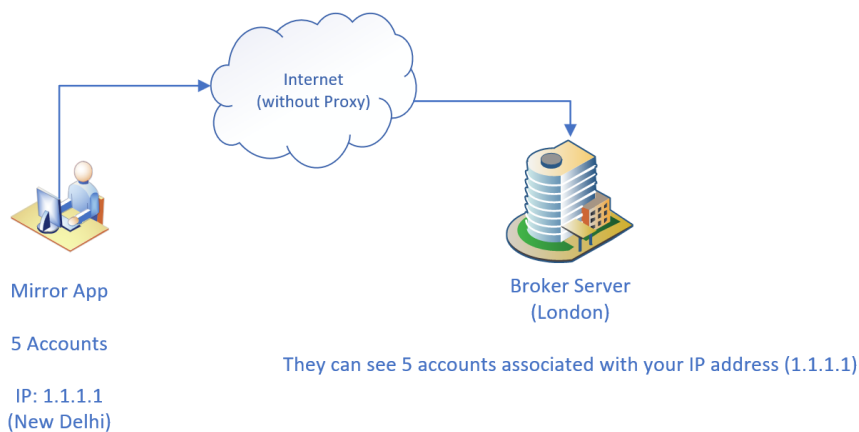
The developers of Mirror Trading Manager are not affiliated with MetaQuotes Software Corp, Spotware Systems Ltd and Microsoft Corporation.



Generally, without Proxy looks like this:

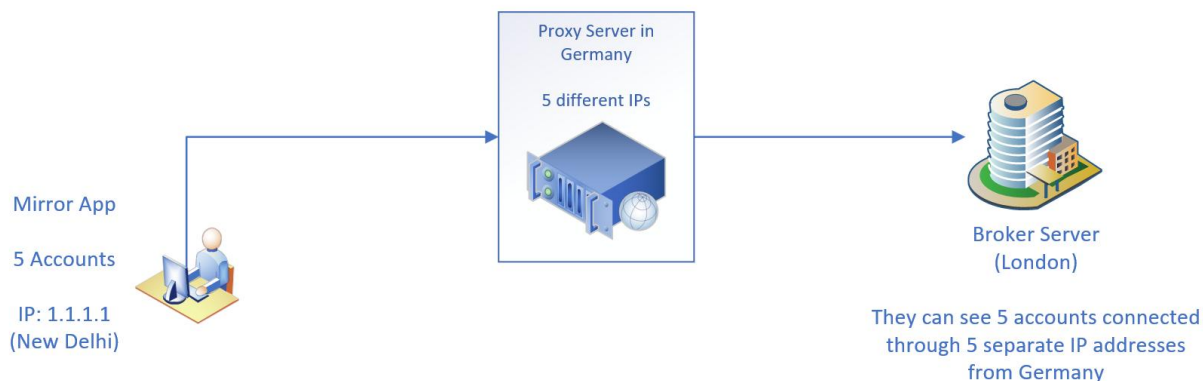


Mirror App, without Proxy looks like this:



This is the way a proxy operates:

Option 1: Proxy Server



✓ Pros of a Proxy Server

Privacy & Anonymity

- Hides your real IP address from the destination server.
- Helps mask user identity and location.

✗ Cons of a Proxy Server

Latency or Performance Drop

- Adds an extra hop to traffic, which may slow things down.
- Poorly configured proxies can cause connection delays or failures.

Not Always Anonymous

- Many proxies log your IP, which can be traced.

Configuration & Maintenance

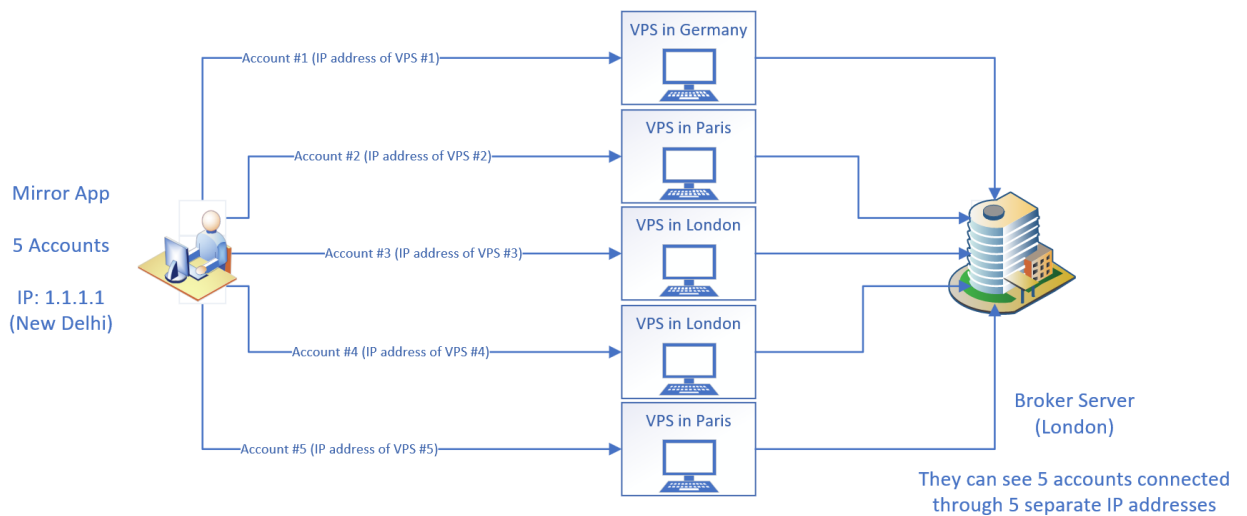
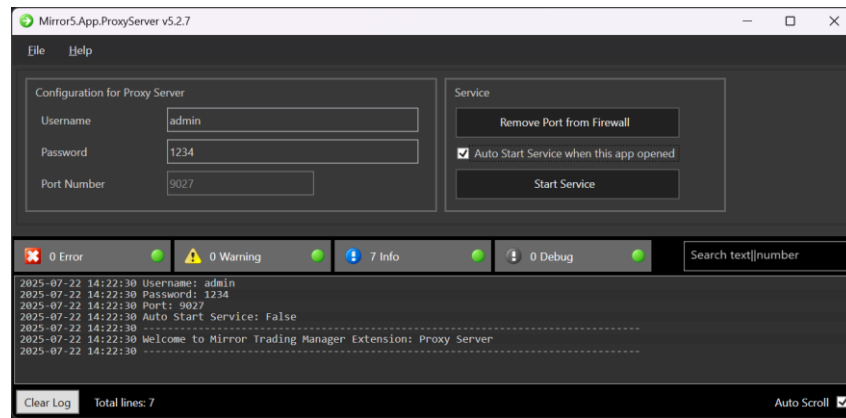
- Requires technical setup and ongoing maintenance.

Compatibility Issues

- Some apps (e.g., MT4, certain APIs) may not work correctly with proxies.



Option 2: With Mirror Proxy Server Application



Each of your clients or friends can simply run the Mirror Proxy Server application from their VPS.

✓ Pros of a Mirror Proxy Server Application

Privacy & Anonymity

- Hides your real IP address from the destination server.
- Helps mask user identity and location.

✗ Cons of a Mirror Proxy Server Application

Configuration & Maintenance

- Too much work to setup each VPS if you take over all the VPS machines
- Make sure the app is running on each VPS
- Might costly if there are too many VPS machines

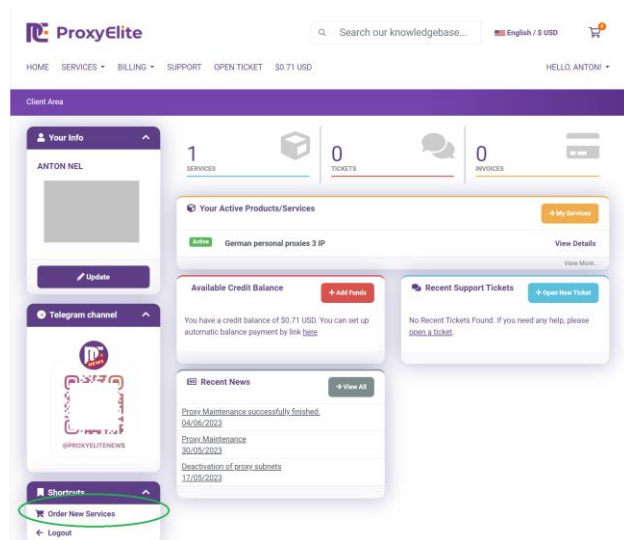


For option 1: Register from one of proxy companies.

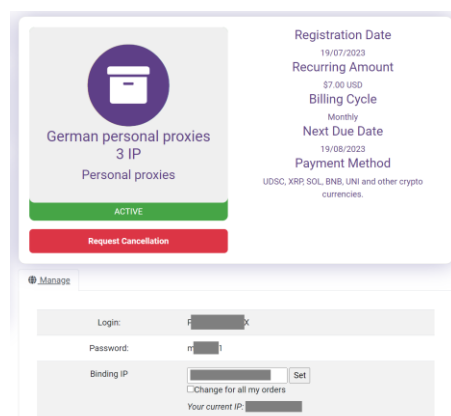
Let's say I choose ProxyElite

<https://proxelite.info/account/>

After Sign In



Click 'Order New Services'. You will see the list of packages. You can choose whatever you want. For example: I chose 'German personal proxies 3 IP' package.



Binding IP is your VPS IP Address where Mirror Trading Manager software is located. Scroll down.... Choose **Proxy Servers with access without password**. List of HTTP/HTTPS proxies with a binding to IP address: **TXT** <- Click to download.

Proxy servers with access without password

Recommended to use proxies. Access to the proxy is possible only from binding IP [redacted].
Use port 8085 for HTTP/HTTPS proxies and port 1085 for SOCKS 4/5 proxies.

List of HTTP/HTTPS proxies with a binding to IP address: **TXT CSV**
List of SOCKS 4/5 proxies with a binding to IP address: **TXT CSV**

Proxy servers with authorization

Proxy only for compatibility with software requiring a login and password for the proxy.
Access to the proxy is possible only with IP from range. [redacted]
Port 8080 for HTTP/HTTPS proxy and port 1080 for SOCKS 4/5 proxy are used.

List of HTTP/HTTPS proxies with authentication by password: **TXT CSV**
List of SOCKS 4/5 proxies with authentication by password: **TXT CSV**

In txt file, there is list of proxy IP Addresses. Use this for Mirror trading accounts. See the examples on the next page.



To check if the proxy is working or not

Example 1:

Mirror Trading Manager software

1. Enter Proxy Server section (see the blue rectangle)
2. Click [Auto Detect IP Address] button from Account dialog box (see the green rectangle).

CONNECTOR

User Name / Account Number: 813 1 Password: #####

Broker Server IP Address: 19 ;:441 IP Geo: [Location Icon] Auto Detect IP Address

Unique Custom CID / Device ID: [Input Field]

Add Credit to Equity? (Note: Some brokers don't add Credit in Equity)

PROXY

Enable Proxy Server:

Proxy Server: [Input Field] Type: Https

Proxy User Name: [Input Field] Password: [Masked]

Auto Detect IP Address

Auto from File

Auto from Terminal

Find Server (e.g. demo/trial/live/real): [Input Field]

Search Broker/Company Name: FASTEST BROKER

Online Database

Auto from Database

[Auto from Terminal] button is disabled because the proxy server checkbox is enabled. You can choose [Auto from File] or [Auto from Database]

[Auto from Database]

Click the [Test All Connections] button, and you should be able to see Status = Passed (green).



Cont. Example 2:

This is what it looks like when you use the Mirror Proxy Server application from another VPS.

